

Plans et cartes du secteur Ward Hunt
Map Collection of the Ward Hunt Area

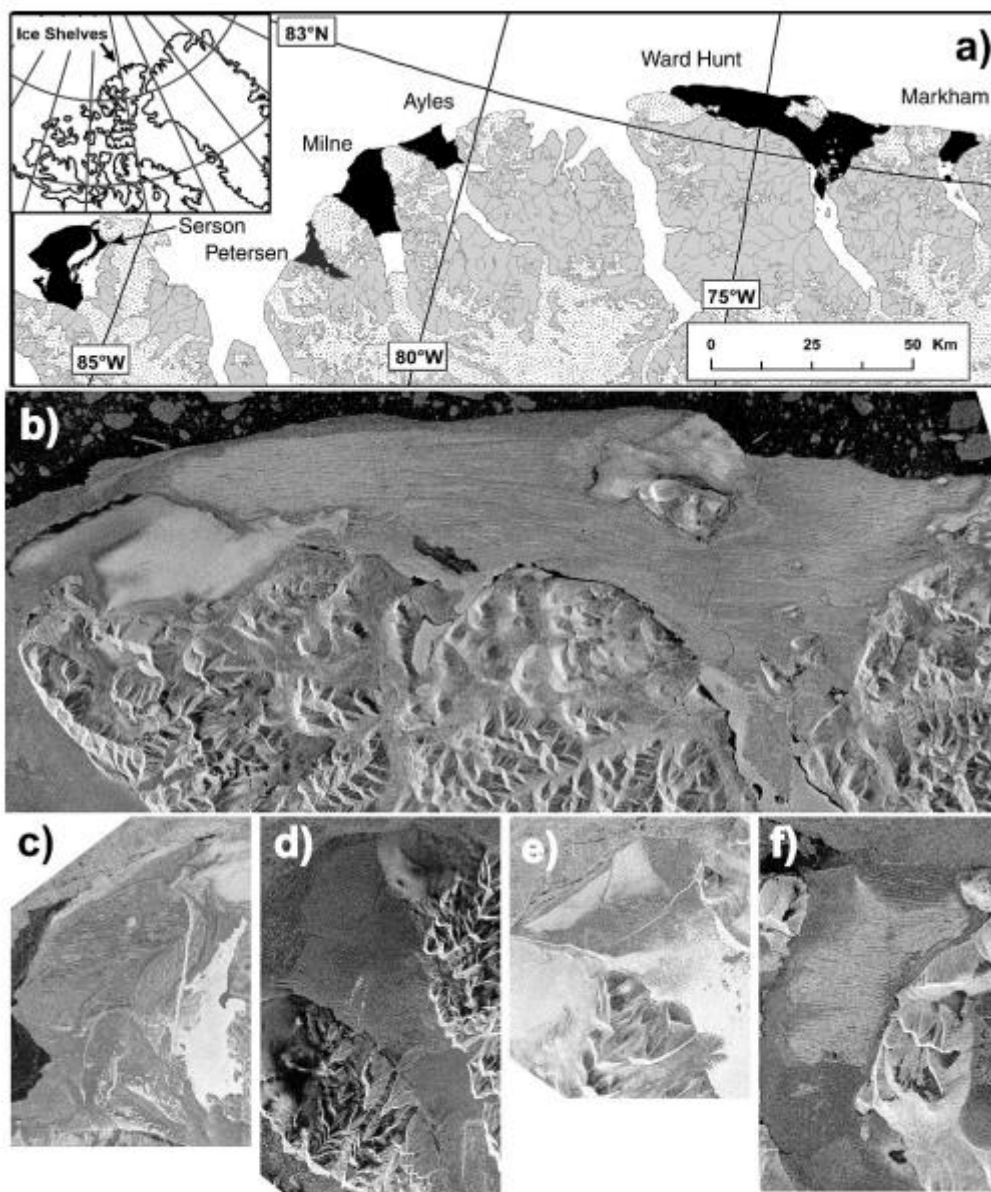


FIGURE 1. Map and RADARSAT images of ice shelves in the Canadian High Arctic that were the subject of this study. (a) The location of ice shelves along the coast of Ellesmere Island. Petersen Ice Shelf (dark gray) was not visited, but was included in areal extent calculations. This map was modified from NTS 120F&G, 340E&H, 340F and 560E 1:250 000, Natural Resources Canada (© Her Majesty the Queen of Canada). (b) Ward Hunt Ice Shelf, RADARSAT image number r1_35477_208, August 21, 2002. (c) Serson Ice Shelf, image number r1_22728_211, March 12, 2000. (d) Milne Ice Shelf, image number r1_29859_214, July 25, 2001. (e) Ayles Ice Shelf, image number r1_37462_215, January 7, 2003. (f) Markham Ice Shelf, image number r1_35261_215, August 6, 2002. All RADARSAT images (© Canadian Space Agency) were radiometrically calibrated and georeferenced. Note that the scale for each image is different (refer to Fig. 1a).

Source: Mueller, D.R., Vincent, W.F., Jeffries, M.O., 2006. Environmental gradients, fragmented habitats and microbiota of a northern ice shelf cryoecosystem, Ellesmere Island, Canada. *Arctic, Antarctic, and Alpine Research*, 38 (4) : 593-607.

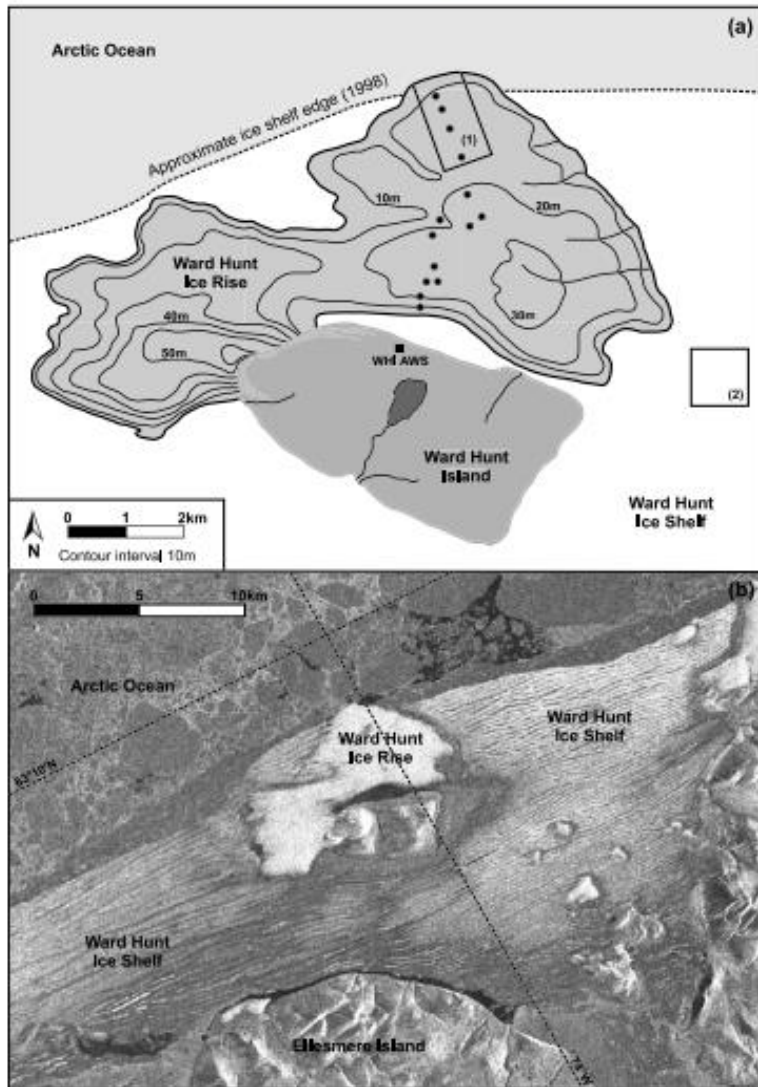


Figure 2. (a) Ward Hunt Ice Rise and surrounding Ward Hunt Ice Shelf. Solid circles mark the ablation stakes installed on the ice rise in 2002. The approximate locations and extents of the original 1959/1966 stake networks on the WHIR (labeled 1) and the WHIS (labeled 2) are indicated by rectangles [Serston, 1979]. The Ward Hunt Island weather station (WHI AWS, solid square) is located at $\sim 81^{\circ}05'N$ and $74^{\circ}09'W$. (b) RADARSAT 1 image of the Ward Hunt Ice Rise and surrounding Ward Hunt Ice Shelf, 30 August 1998. The ice shelf surface shows the characteristic series of long, parallel ridges and troughs, which form elongated meltwater lakes each summer. Recent calving events have altered the northern margin of the ice shelf [Mueller *et al.*, 2003]. (Modified from Vincent *et al.* [2001, Figure 2], reproduced with their permission.)

Source: Braun, C., D. R. Hardy, R. S. Bradley, and V. Sahanatien, 2004, Surface mass balance of the Ward Hunt Ice Rise and Ward Hunt Ice Shelf, Ellesmere Island, Nunavut, Canada, *J. Geophys. Res.*, 109, D22110, doi:10.1029/2004JD004560

Mise à jour : 2013 – 08-20